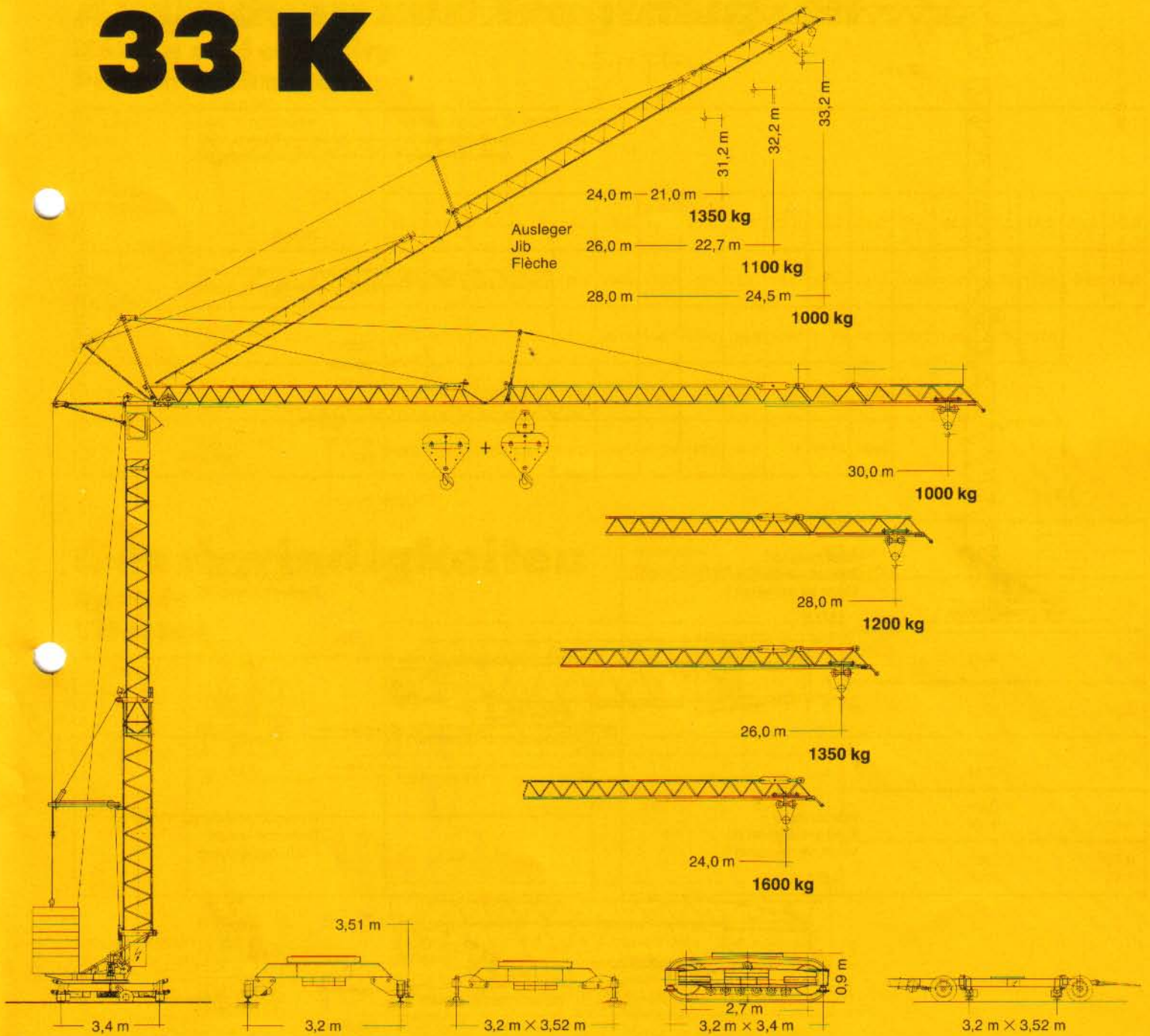
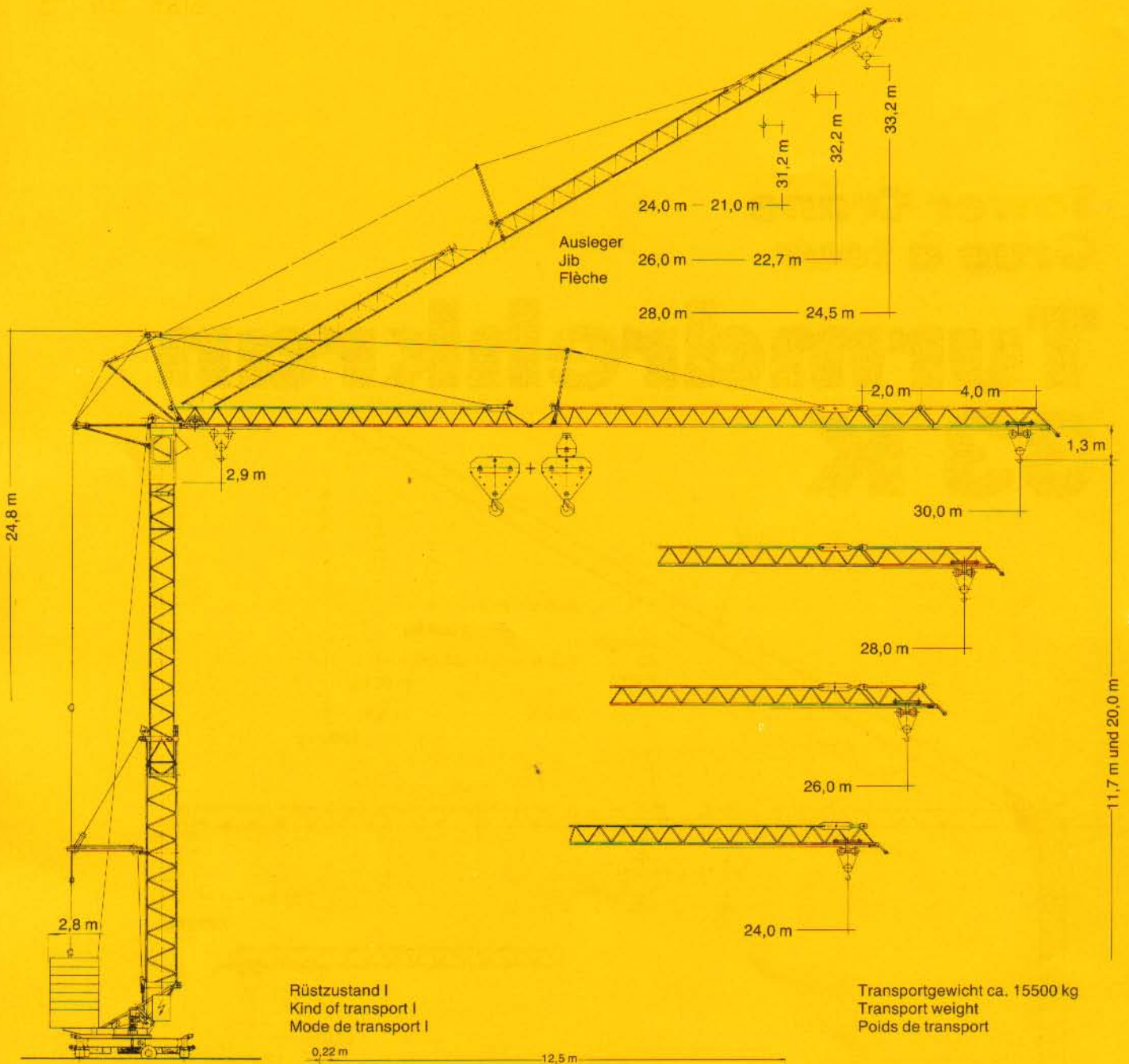


**Tower Crane
Grue à tour**

**Turmdrehkran
33 K**

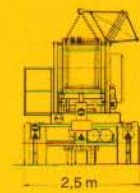
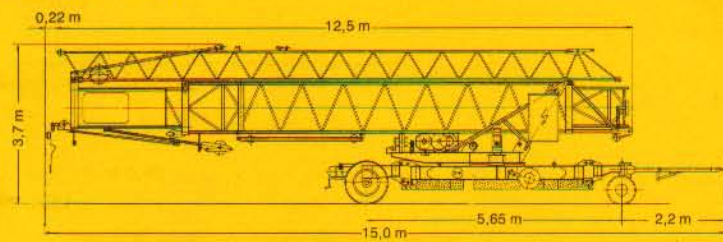


LIEBHERR



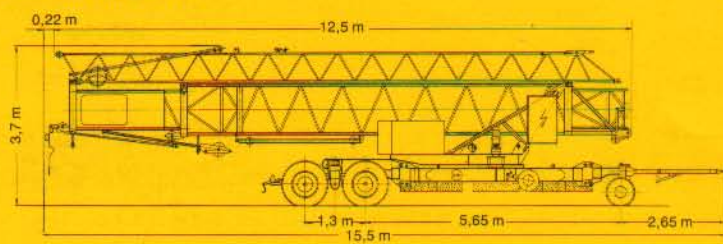
Rüstzustand I
Kind of transport I
Mode de transport I

Transportgewicht ca. 15500 kg
Transport weight
Poids de transport



Rüstzustand II
Kind of transport II
Mode de transport II

Transportgewicht ca. 19500 kg
Transport weight
Poids de transport



33 K

Gewicht

Weight Poids

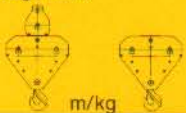
Max. Eckkraft in Betrieb Max. corner pressure in operation Réaction max. par angle en service	176 kN*
Max. Eckkraft außer Betrieb Max. corner pressure out of operation Réaction max. par angle hors service	115 kN*
Zentralballast ca. Central ballast approx. Lest-fixe de chassis env.	2400 kg

Gegengewicht ca. Counter weight approx. Contrepoids env.	17000 kg
Konstruktionsgewicht ca. Dead weight approx. Poids de la construction env.	10400 kg

* Umrechnung der Einheiten für Kräfte 1 kp ≈ 10 N; 10 kN ≈ 1 Mp. / Conversion of the units for forces. / Conversion des unités des forces.

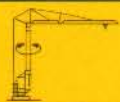


Ausladung und Tragfähigkeit


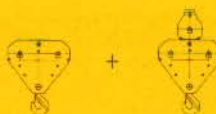
Radius and capacity Portée et charge

Auslegerlänge Length of jib Longueur de flèche m	Max. Tragfähigkeit Max. capacity Charge max.  m/kg	Ausladung und Tragfähigkeit m/kg Radius and capacity Portée et charge																		
		13,0	14,0	15,0	16,0	17,0	18,0	19,0	20,0	21,0	22,0	23,0	24,0	25,0	26,0	27,0	28,0	29,0	30,0	
30,0	2,9 – 12,0 3000 – 21,4 1500	2725	2495	2295	2125	1980	1845	1730	1630	1535	1450	1380	1310	1250	1190	1135	1085	1040	1000	
28,0	2,9 – 12,95 3000 – 23,2 1500	2985	2730	2515	2330	2170	2015	1900	1790	1690	1590	1515	1430	1375	1310	1255	1200			
26,0	2,9 – 13,25 3000 – 23,8 1500	3000	2810	2585	2390	2230	2070	1955	1840	1740	1640	1560	1480	1415	1350					
24,0	2,9 – 14,06 3000 – 24,0 1500	3000	3000	2780	2570	2400	2240	2105	1980	1870	1775	1680	1600							

Geschwindigkeiten

Speeds Vitesses

	U/min 0 – 1,0 sl./min tr./mn	1,5 kW
	18,0 / 36,0 m/min	1,0 / 1,45 kW
	25,0 m/min	2 × 1,5 kW

Hubwerk Hoist gear Mécanisme de levage	Gang Gear Boîte	kg	m/min
	1	1500	6,0
	2	1500	27,0
	3	1000	55,0
	1	1500 3000	6,0 3,0
	2	1500 3000	27,0 13,5
	3	1000 2000	55,0 27,5

Kabelquerschnitt bei 380 V
Cross section of cable
Section of câble à

Betriebsspannung 380 V
Operating voltage
Tension de service

bis 20,0 m
up to
jusqu'à

Frequenz 50 Hz
Frequency
Fréquence

bis 28,0 m
up to
jusqu'à

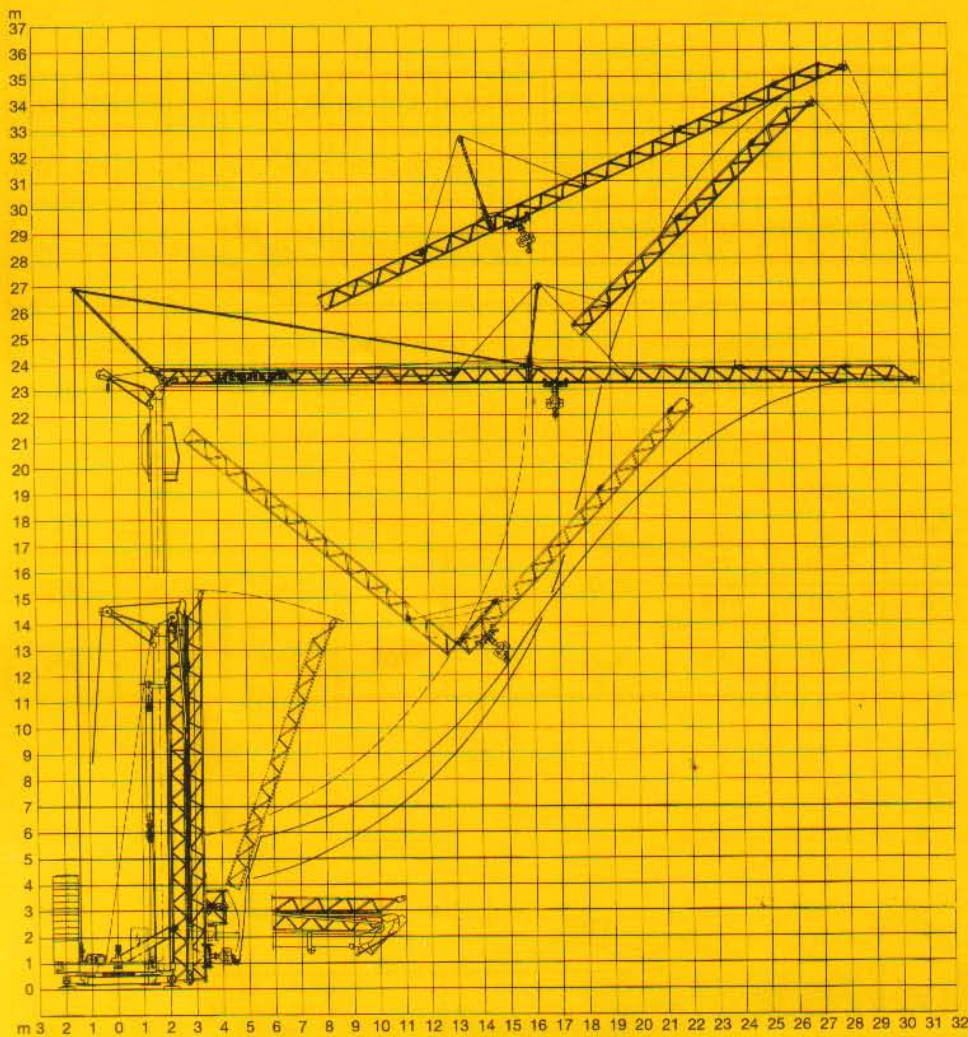
Gesamtmotorenleistung 16,95 kW
Total motor output
Puissance totale des moteurs

Technische Daten - Technical data Caractéristiques techniques

Aufstellvorgang

Erection procedure


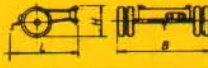
Déroulement de montage



Kolli-Liste

Packing List

Liste de colisage

Pos. Item Rep.	Anz. Qty. Qté			L (m)	B (m)	H (m)	kg
1	1	Transportachse vorne Tra 100 KY 1 Road transport axle front Essieux de transport avant		3,00	1,13	0,97	660
2	1	Transportachse hinten Tra 120 GY 1 Road transport axle behind Essieux de transport arrière		1,90	2,50	1,05	1150
3	1	Kiste mit Seilen und Kleinteilen Case with ropes and small parts Caisse avec câbles et pièces détachées		1,00	0,80	1,00	450

Datenblatt Nr. 120 P - 2925 - H 1 B 3 DIN 15018 und OENORM T 3 - 03.92
Data sheet
Feuille de caractéristiques

Konstruktionsänderungen vorbehalten!
Subject to alterations!
Sous réserves de modifications!

Printed in Germany

Nehmen Sie Kontakt auf mit
Contact

Mettez-vous en rapport avec

LIEBHERR-WERK BIBERACH GMBH, Postfach 1663, D-7950 Biberach an der Riß 1
Telefon (07351) 41-0, Telex 71 802, Telefax (07351) 4 1225